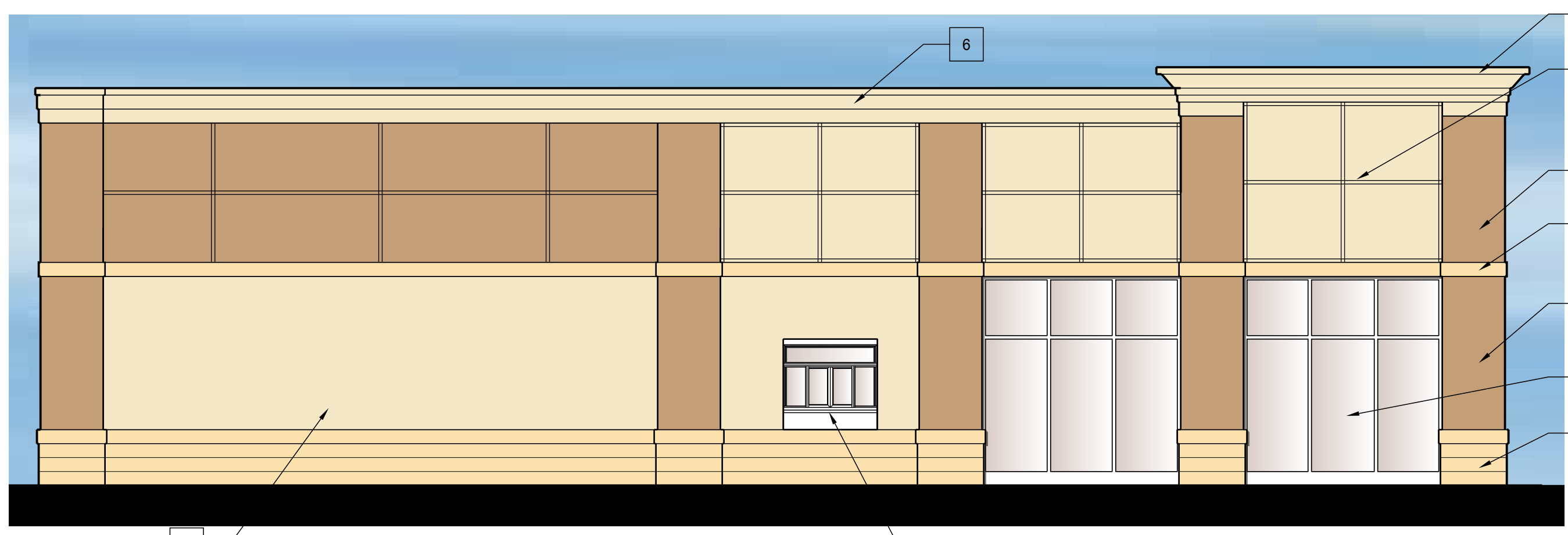


These documents in this form, electronic media, are being provided as your request. The information contained is proprietary in nature and may only be used for the current project. All documents contained herein including, but not limited to, symbol libraries, books, details, etc. may not be reproduced, sold, distributed or utilized in any form on other projects without the express written permission of JTS Architects. Due to the unsecured nature of these documents, electronic media and the ability of the originator to establish controls over the use thereof, JTS Architects assumes no responsibility for any consequences arising out of the use of the data. It is the user's responsibility to check the validity of all information contained herein. The user shall assume all risks and liabilities resulting from the use of this data. By accessing and/or making any use of the information contained herein, the user shall agree to the above terms regarding the use of the information contained herein.

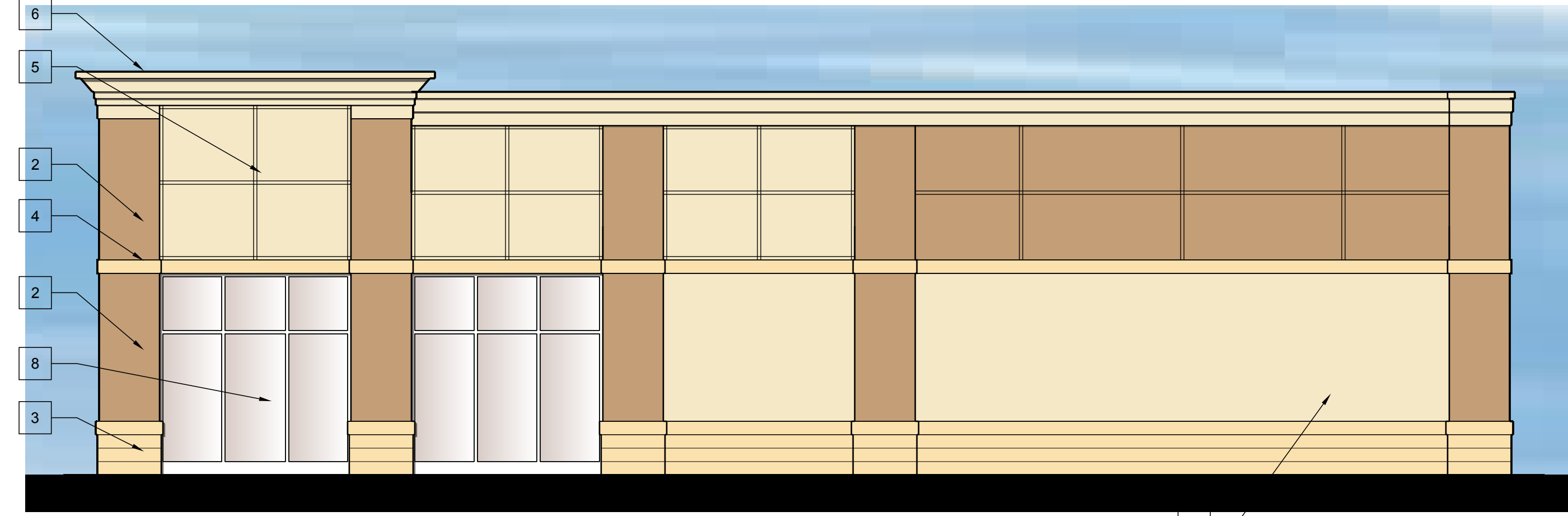


1 WEST (FRONT) ELEVATION  
3/16" = 1'-0"

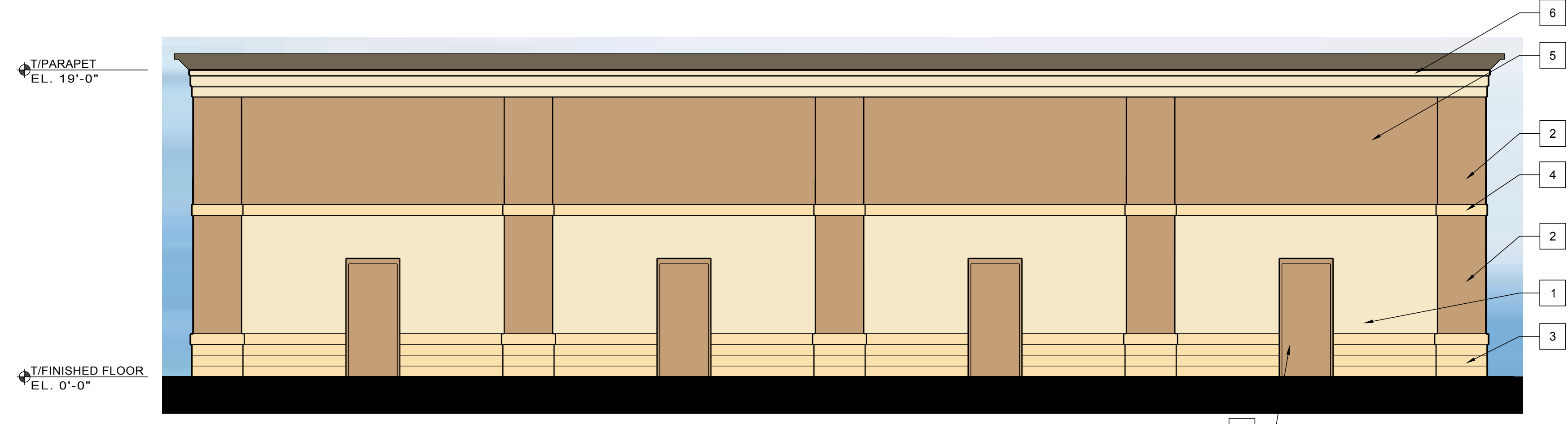
- ELEVATION KEY NOTES:**
- 1 UTILITY FACE BRICK COLOR #1 - LIGHT TAN
  - 2 UTILITY FACE BRICK COLOR #2 - LIGHT BROWN
  - 3 SPLIT FACE CMU
  - 4 SMOOTH FACE CMU
  - 5 E.I.F.S. FACADE
  - 6 E.I.F.S. CROWN MOLDING
  - 7 CONTINUOUS METAL COPING
  - 8 ALUMINUM STOREFRONT SYSTEM
  - 9 HOLLOW METAL DOOR AND FRAME
  - 10 DRIVE THRU WINDOW ASSEMBLY



2 NORTH ELEVATION  
3/16" = 1'-0"



3 SOUTH ELEVATION  
3/16" = 1'-0"



4 EAST (REAR) ELEVATION  
3/16" = 1'-0"